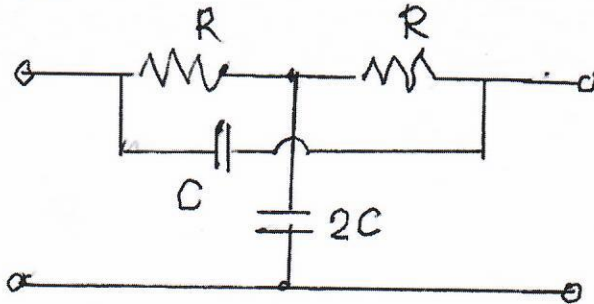


MIDTERM EXAMINATION

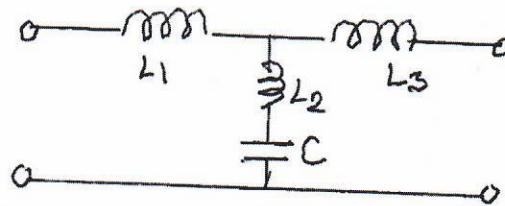
October 19, 2022

Open Book

1. Find the short-circuit parameters of the circuit shown below. Assume $R = 5 \text{ k}\Omega$, $C = 10 \text{ pF}$ and $f = 3 \text{ MHz}$.



2. Two of the short-circuit admittances of the circuit shown are $Y_{11} = Y_{22} = (7s^2 + 1)/(16s^3 + 4s)$. Find all element values.



3. Find the chain matrices of the two-ports shown below.

